

# Project ECHO for Campus Suicide Prevention

March 30, 2021

## Student-Led Mental Health Initiatives

Kirk Luder, M.D., Washington & Lee University

Kristin Day, Ph.D. LPC, University of Richmond

Jane Wiggins, Ph.D

## Case presentation by:

Wendy Smith, MA, Blue Ridge Community College

The Campus Suicide Prevention Center of Virginia Project ECHO team:  
Jane Wiggins, Ph.D., Danette Gibbs, Ph.D., Gabriel Anderson, M.S.



The **Campus Suicide  
Prevention Center**  
of **Virginia**

Project ECHO® for Campus Suicide Prevention is part of the larger ECHO educational community that was created by the University of New Mexico's Health Sciences Center

In order to support Project ECHO®, we collect the following participation data:  
Participant's name, e-mail, credentials, role, and institution

These data allow Project ECHO® to measure, analyze, and report on the movement's reach. It may be used in reports, on maps and visualizations, for research, for communications and surveys, for data quality assurance activities, and for decision-making related to new initiatives.

## Data Collection



Logging on as an ECHO<sup>®</sup> participant through Zoom serves as permission to be included in the reporting and to be recorded. Each session is recorded, stored, and made available to other ECHO participants.

We will record the introduction and didactic portions of our sessions

We will NOT record case presentations

Portions of sessions will be recorded



1. Overview of ECHO® session (12:00 pm)
2. Introductions (12:05)
3. Didactic Presentation (12:15 pm)
4. Case presentation (12:50 pm)
  - A. Case presented (5 min)
  - B. Clarifying questions
    - a. ECHO® participants
    - b. CSPCVA hub
    - c. Case summary by ECHO® discussion leader
  - C. Recommendations
    - a. ECHO® participants
    - b. CSPCVA hub
    - c. Summary of recommendations by ECHO® discussion leader
5. Closing remarks and questions (1:25 pm)

What Does an  Session Look Like?



# Participation Tips

- All participants are muted during the presentation.
- If you have a question or comment during discussions, please raise your hand. We will call on you. Press your space bar to talk.
- ***We encourage participation.*** (Reminder: participation is recorded.)
- If you called with a phone to hear the audio, hit \*6 to unmute yourself.
- For technical problems (such as echoing, audio level etc.), use the chat function to contact our IT specialist, Gabe Anderson, who will assist.

# CE Credits

for Project ECHO for Campus Suicide  
Prevention will be available through  
James Madison University.

(see Project ECHO syllabus or website for more info)



# Protecting Privacy



# Introductions





# Student-Led Mental Health Initiatives

Kirk Luder, M.D., Washington & Lee University  
Kristin Day, Ph.D. LPC, University of Richmond  
Jane Wiggins, Ph.D



The Campus Suicide  
Prevention Center  
of Virginia

March 30, 2021

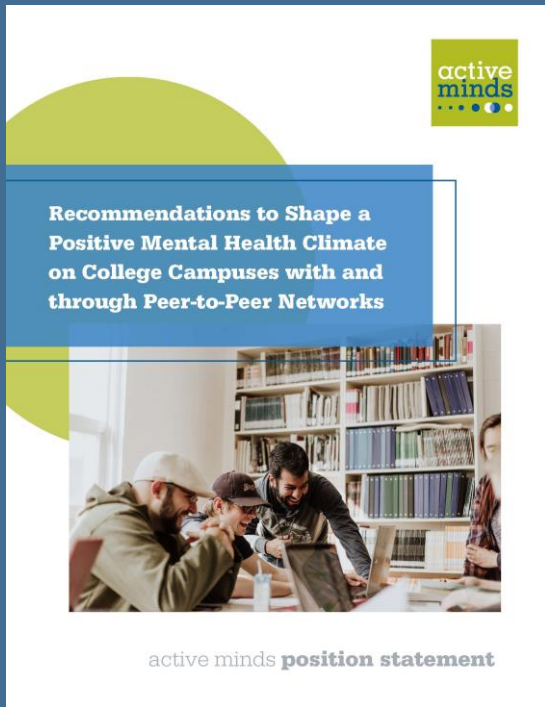
- How are you involving students as leaders in your mental health initiative?
- How do you select students for these roles?
- How do you supervise your student helpers/leaders?
- Successes and challenges?

# Questions for today



# Contributing to A Comprehensive Approach





# Recommendations to Shape a Positive Mental Health Climate on College Campuses with and through Peer-to-Peer Networks

~Active Minds

## Resources



**BEYOND AWARENESS:**  
STUDENT-LED INNOVATION IN CAMPUS MENTAL HEALTH



Collegiate Mental Health Innovation Council  
2018 Summary Report and Program Highlight

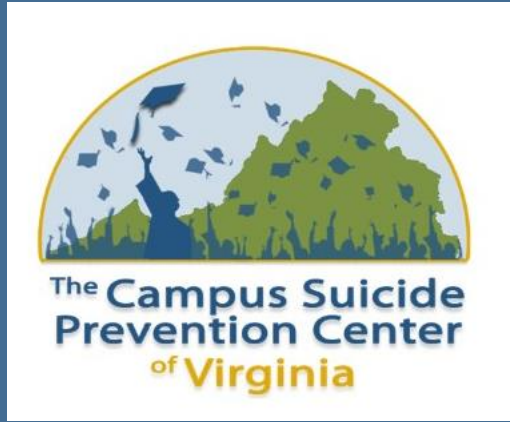


# Beyond Awareness: Student-Led Innovation in Campus Mental Health

~Mental Health America

# Resources





# Questions?

[www.CampusSuicidePreventionVA.org/](http://www.CampusSuicidePreventionVA.org/)

Acknowledgement:  
Funding received from the Virginia Department of  
Health's Virginia Project ECHO®



# Case Presentation

**Calling  
All to  
Volunteer!**

**Who Wants to Present a  
Case?**





# Interested in CAMS Training?

3 hour online course for counseling professionals in a suicide-specific treatment model

Contact Jane - [wigginjr@jmu.edu](mailto:wigginjr@jmu.edu)



# Check your Inbox:

- Evaluation form link
- Link to video of today's didactic and PowerPoint
- Additional Resources
- Case presentation form link

# Thanks for your participation!

We hope to see you in two weeks!

**Your Moving Mind: The Neuroscience of  
Stress Management through Movement**

**Tuesday, April 13, 2021 (12-1:30 PM)**

